

# United Capital Group Energy LLC

## Summary of Manufacturing & Fabrication Services



**UNITED CAPITAL GROUP ENERGY  
L.L.C**

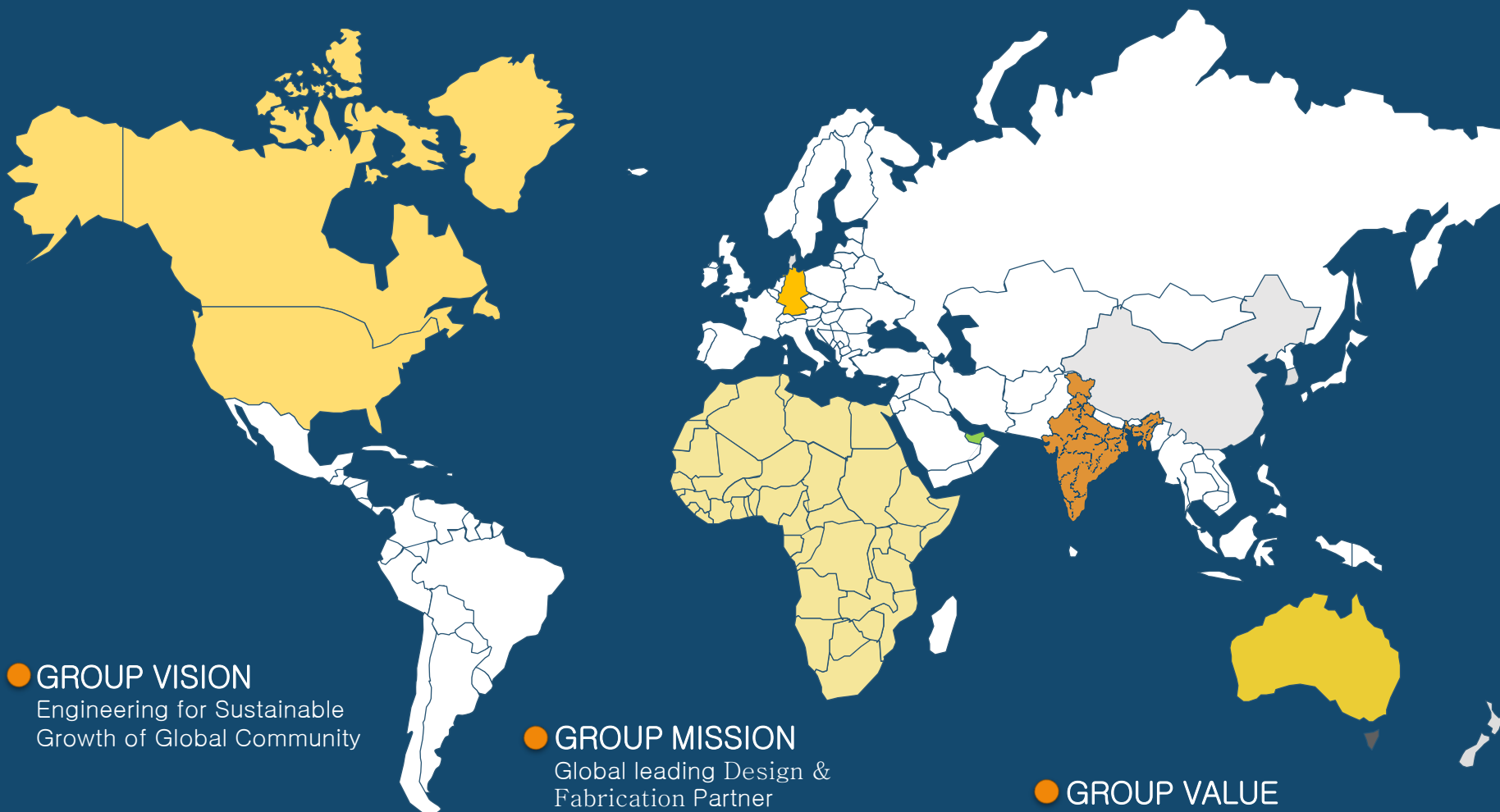
United Capital Group Energy LLC has been Designing & Fabricating:

- Process Skids
- Pressure Vessels
- Pig Launchers & Receivers
- Metering Skids
- Dosing Skids
- Carbon Steel Tanks
- Structural Steel Buildings
- E Houses (Skid Based)
- Concrete Substations

Manufacturing facility located in:

- Houston, USA
- Phoenix, USA

Please see details of our manufacturing services below.



**GROUP VISION**  
Engineering for Sustainable  
Growth of Global Community

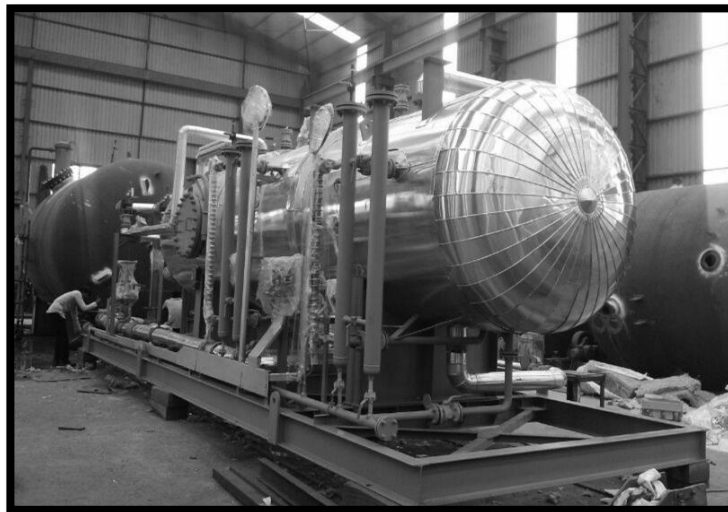
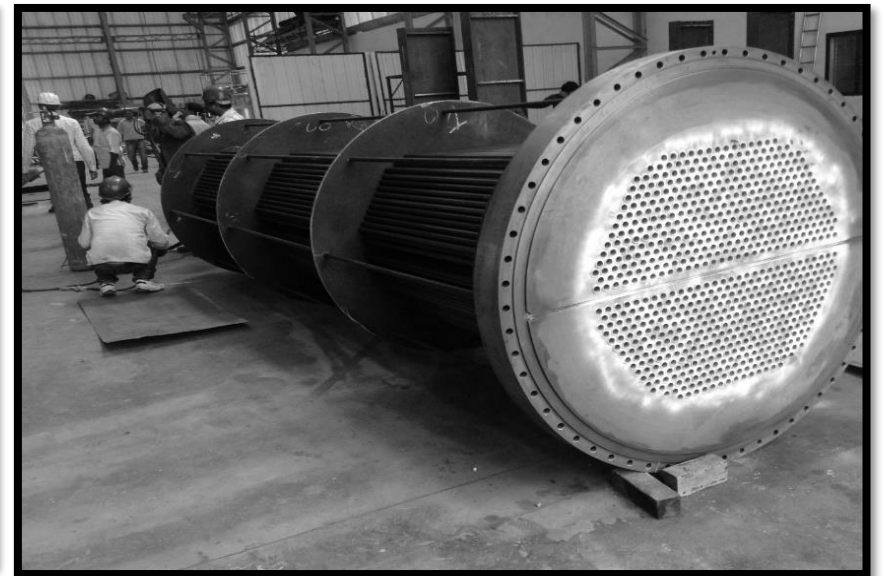
**GROUP MISSION**  
Global leading Design &  
Fabrication Partner

**GROUP VALUE**  
Integrity Creativity Diversity Learning



*Complete Solution to Process Plant Industry*

# FABRICATION SERVICES



*Complete Solution to Process Plant Industry*

# FACILITY DETAILS

## United Capital Group Energy Fabrication Facility Size & Capability

### **WORKSHOP CAPACITIES**

- 20 Mtr. X 70 Mtr. X 9 Mtr. (Hook Height )

### **OVER HEAD CRANE EOT**

- 20 MT

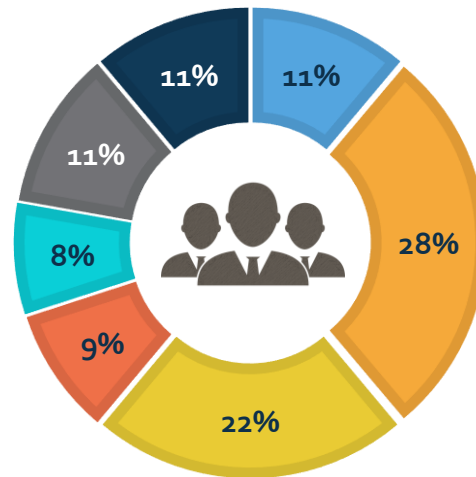
### **HYDRA**

- 1 Nos. 14 MT - HYDRA mobile crane



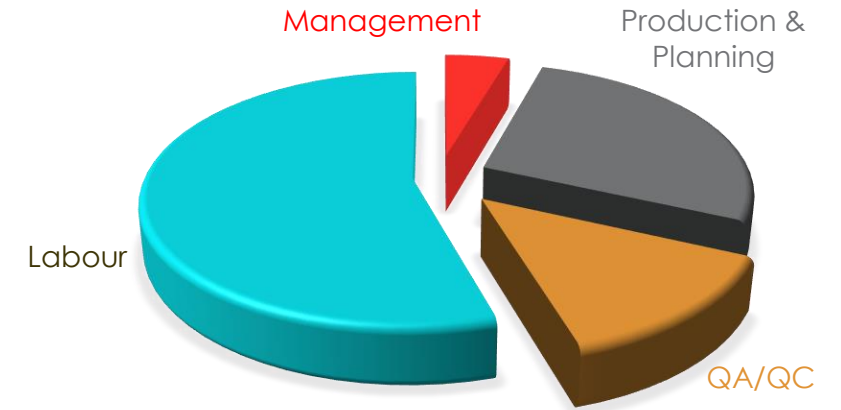
# MANPOWER

## Engineering Workforce 200 Engineers



- Process
- Mechanical & Piping
- Civil & Structure
- Instrumentation
- Electrical
- IT
- Management

## Fabrication Division 150 Fabricators 10 QA/QC



# INFRASTRUCTURE

## LIST OF MACHINERY

- Drilling Machine
  - Bench Drilling Machine
  - Magnetic Drilling Machine
- Welding Machine
  - MIG Welding Machine
  - SAW Welding Machine
  - AC-DC Welding Machine
  - Argon, Arc, Spot Welding Machine
  - Welding Rectifier
  - Welding Accessories
- Tube expanders Range from 1/4" OD to 2" OD Tubes
- Automatic Electronic Control Panel
- Grinding Machine
  - AG7,AG5,AG4
  - Bench Grinding Machine
- Chop Shaw Cutting Machine (350mm)
- Plasma Cutting Machine (10mm to 60mm)
- CNC Cutting Machine
  - Upto 200mm Thk, with 2.5Mtr X 12 Mtr Bed
  - Upto 100mm Thk with 1.25 Mtr X 6 Mtr Bed (Facility-3)
- Pug Cutting Machine
- Hacksaw Cutting Machine
- GAS Cutting Accessories



# INFRASTRUCTURE

## LIST OF MACHINERY

- Hydraulic Test Pump – Pressure up to 500 kgs/cm<sup>2</sup>
- Electric Baking Oven
- Electric Holding Oven
- Portable Ovens
- Chain Pulley Blocks (1/2 T to 10 T)
- Lifting Shifting Accessories
- Plate Rolling Machine (upto 25mm)
- Rotators Electrically operated (50 MT)
- Hydraulic Press (400 T)
- Torque Wrench
- Air Compressor, 7 Kg Pressure
- Air Compressor, 5 Kg Pressure



# INFRASTRUCTURE

# MEASURING INSTRUMENTS

- Vernier Calipers
- Inside / Outside calipers
- Micrometer Screw gauge
- Bore Gauge with Dial Gauge (18 – 35 mm)
- Hardness Tester
- Thickness Meter
- DFT Meter
- DB Meter (For Noise Testing)
- Dial Calliper
- IR Thermometer
- Digital Tachometer
- Machined Surface Comparator
- Steel Tape
- Steel Scale
- Densito Meter
- Welding Gauges



# INFRASTRUCTURE

## LIST OF TESTING FACILITY

- In House Facilities
  - Die Penetration Testing
  - Pneumatic Testing
  - Hydraulic Testing
  - Surface Table, Comparators, Inspection Tools, Gauges and Fixtures
- Physical & Chemical Testing of Material – NABL Approved Labs
- UT & Radiography Testing – Approved Agencies
- Third Party Inspection (If Required) – HSB, LRA, BVIS, TUV, SGS, DNV, ABS, UHDE





# MATERIAL OF CONSTRUCTION CAPABILITY

## Carbon Steel:

IS 2062, SA 516 Gr. 60/70 (N/HIC/NACE/LTCS), SA-105N, SA-266 CL-2, SA266 CL-4, SA-350 LF2, SA-106 Gr B, SA333 Gr 6, SA53 Gr B, API – 5L etc.

## Stainless Steel:

SA240 TP 304/304L, SA240TP 316/316L, SA240 TP 321, SA240 TP310, UNS31803 (Duplex) UNS32750 (Super Duplex), SA312 TP 304/304L, SA312 TP 316/316L, SA312 TP 321, SA312 TP 310, SA182 F304/304L, SA 182 F316/316L, SA366 F1, SA366 F5, SA366 F11

## Low Alloy Steel :

SA 387 Gr P-11, SA387 Gr P-9, SA387 Gr P-5, SA387 Gr P91



# MATERIAL OF CONSTRUCTION CAPABILITY

Special Grade Material:

CuNi 90/10 (C70600), CuNi 70/30 (C71500), SB111  
C70600, SB111 C71500, Hastalloy C270, Monel UNS4400,  
AL 6061 T6, AL 5083, SB241 5083-O



# METER RUN SKID

MOC: SS 316L

TESTING PRESSURE: 250  
Kg/Cm<sup>2</sup>



Complete Solution to Process Plant Industry

# SCRAPER SKID

## SENDER & RECEIVER

Size : 26" Carbon Steel  
Pressure: 43 Barg



# SCRAPER SKID

SENDER & RECIEVER

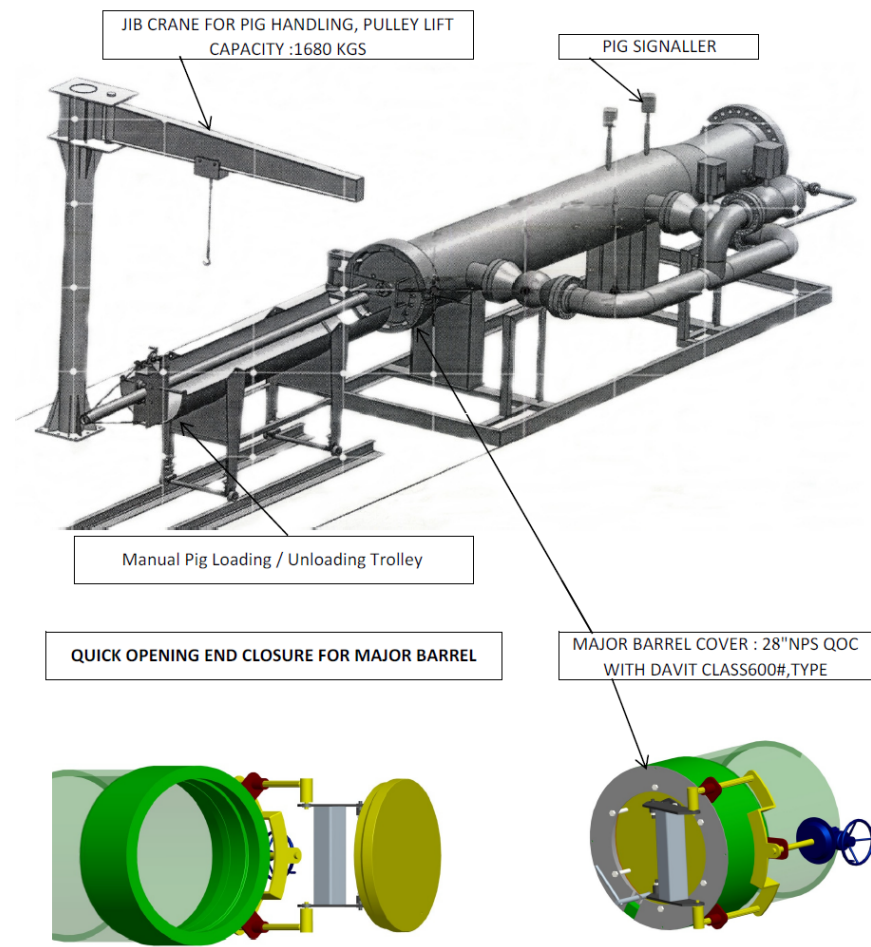
Size : 34" Carbon Steel  
Pressure: 39.2Barg



Complete Solution to Process Plant Industry

# SCRAPER SKID

SENDER & RECIEVER  
Size : 28" Carbon Steel  
Pressure: 80.7Barg



# SHELL & TUBE HEAT EXCHANGER

(AIR COOLER)  
TYPE : BEM



# KNOCK OUT SKID FOR OIL & GAS INDUSTRIES

Capacity :  
16000 BOPD



*Complete Solution to Process Plant Industry*



# THREE PHASE SEPERATOR SKID

Capacity :  
6000 BOPD



*Complete Solution to Process Plant Industry*

# DIESEL OIL STORAGE TANK



*Complete Solution to Process Plant Industry*